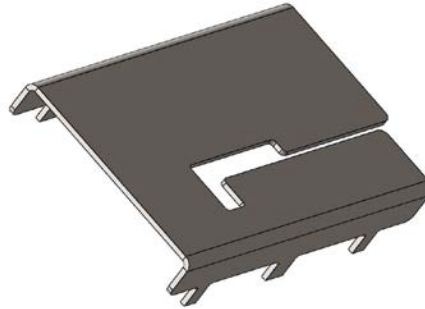


WPANT10073-S1A

900MHz ISM band Embedded Antenna



Application

This ISM band stamped metal antenna has a very compact structure, and can be easily installed on a circuit board inside any wireless device.

We can assist your engineers to optimize mounting positions for these antennas in your specific application and can further assist to trouble shoot system integration issues such as TRP/TIS and FCC requirements. We specialize in developing customized Antenna solutions. Please contact sales@worldproducts.com with your specific application requirements.

Electrical Properties

Operating Frequency	860 – 930 MHz
VSWR (Typical)*	< 3:1
Peak Gain [dBi] (Typical)*	0 to 1 dBi
Efficiency [%] (Typical)*	65 %
Pattern	Near Omni-directional

*Note: These performance metrics are recorded with the Antenna placed on a WPI evaluation board. Any modifications with regards to the application / use of this antenna may change antenna performance characteristics.

Mechanical / Environmental Properties

Antenna Dimensions	1.7" x 1" x 0.2" (43.3mm x 26.5mm x 5mm)
Antenna Base Material	0.025" thick cold rolled steel
Antenna Surface Plating	Post plated tin, minimum 5.4 microns
Operating / Storage Temperature	-40°C to +125°C
Environmental	Meets standards for UL 94V-0
Hazardous Materials	RoHS Compliant

Pictures of the Antenna (as installed on the Evaluation Board)

